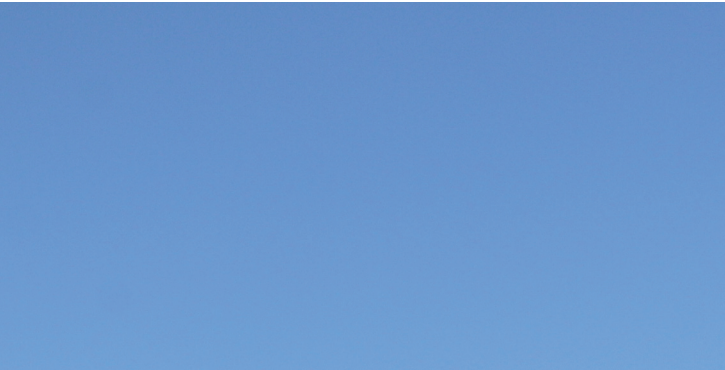


Quick Mount PV[®]

RESPECT THE ROOF



Rails

Item Number	Description
QMR-RL14-A-60	QRail Light, 14 ft., Mill
QMR-RL14-B-60	QRail Light, 14 ft., Black
QMR-RS14-A-60	QRail Standard, 14 ft., Mill
QMR-RS14-B-60	QRail Standard, 14 ft., Black



Rail Skirt

Item Number	Description
QMR-QS14-B-24	QSkirt 14ft
QMR-QSS-A-12	QSkirt Splice
QMR-QSE-B-12	QSkirt End Cap Pairs



Rail Splices

Item Number	Description
QMR-ISL-A-15	QSplice Internal, Light, Mill
QMR-ISS-A-15	QSplice Internal, Standard, Mill



Rail End Caps

Item Number	Description
QMR-CPL-B-50	End Cap Light, Black (5 Bags of 10)
QMR-CPS-B-50	End Cap Standard, Black (5 Bags of 10)



Rail Mid Clamps

Item Number	Description
QMR-UMC3045-A-20	Universal Mid Clamp, 30-45mm, w/ Bonding, Mill
QMR-UMC3045-B-20	Universal Mid Clamp, 30-45mm, w/ Bonding, Black



Rail End Clamps

Item Number	Description
QMR-UEC3045-A-20	Universal End Clamp, 30-45mm, Mill
QMR-UEC3045-B-20	Universal End Clamp, 30-45mm, Black
QMR-HEC-A-20	Hidden End Clamp, Mill



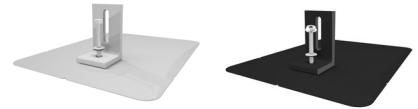
Rail End Clamps

Item Number	Description
QMC-LF-A-12	L-Foot, Mill
QMC-LF-B-12	L-Foot, Black
QMC-LF5-A-12	L-Foot, Fixed Tilt, 5 Degree, Mill
QMC-LF10-A-12	L-Foot, Fixed Tilt, 10 Degree, Mill



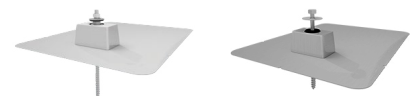
L-Mount®

Item Number	Description
QMLM-A-12	L-mount, 9" x 12", Mill
QMLM-B-12	L-mount, 9" x 12", Black
QMLM-ST-B-12	L-mount 5/16" Structural Screw, 9" x 12", Black



E-Mount

Item Number	Description
QMSE-A-12	E-Mount, 9" x 12", Mill
QMSE-LAG-A-12	E-Mount with Lag Bolt, 9" x 12", Mill



Comp Mounts

Item Number	Description
QMSC-A-12	Classic Composition Mount, 12" x 12", Mill
QMSC-B-12	Classic Composition Mount, 12" x 12", Bronze
QMNC-A-12	QBase Comp Mount, 3.25" Post - 3.75" Net, 12" x 12", Mill



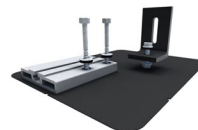
Conduit Mounts

Item Number	Description
QMCC-A-12	Classic Conduit Composition Mount, 9" x 12", Mill
QMCPA-A-12	Conduit Penetration Flashing, Mill



Shared Rail Mount

Item Number	Description
QMSRC-B-12	Shared Rail Mount, Comp, Black



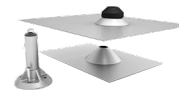
QuickHook for Side Mounted Rails

Item Number	Description
QMHSS-NF-A-12	Quick Hook Standard Height Hook, (No Flashing), Mill
QMHLN-NF-A-12	Quick Hook Low Height Hook, (No Flashing), Mill



QBase Universal Tile Mount

Item Number	Description
QMUTM-A-12	QBase Universal Mount, 6.5" Post - 7" Net, 18" x 18", Mill



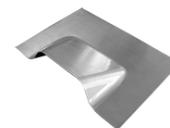
Tile Replacement

Item Number	Description
QMTR-BM-A-12	Tile Replacement, Base Mount, Mill
QMTR-S3.25-A-12	Tile Replacement, S-Tile, 3-1/4" Post, Mill
QMTR-S3.25-B-12	Tile Replacement, S-Tile, 3-1/4" Post, Black
QMTR-F3.25-A-12	Tile Replacement, Flat Tile, 3-1/4" Post, Mill
QMTR-F3.25-B-12	Tile Replacement, Flat Tile, 3-1/4" Post, Black
QMTR-W4-A-12	Tile Replacement, W-Tile, 4" Post, Mill
QMTR-W4-B-12	Tile Replacement, W-Tile, 4" Post, Black
QMC-TRF-F-A-12	Tile Replacement Flashing, Flat Tile, Mill
QMC-TRF-S-A-12	Tile Replacement Flashing, S-Tile, Mill
QMC-TRF-W-A-12	Tile Replacement Flashing, W-Tile, Mill



Seamless Flashing

Item Number	Description
QMC-F9X14-A-1	Seamless Flashing, 9" x 14", 3003, Mill



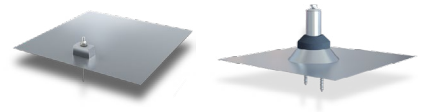
Conduit Mounts

Item Number	Description
QMCMT-A-12	Conduit Mount for Tile, Mill
QMCPT-A-12	Conduit Penetration Flashing, Tile, Mill



Metal, Shake & Slate (18 x 18")

Item Number	Description
QMLC-A-12	Classic Shake Mount, Mill
QMNS-A-12	QBase Metal, Shake & Slate, 3.25" Post - 3.75" Net, Mill



Low Slope Roof Attachments (No Flashing)

Item Number	Description
QMLSH-3.75-A-12	QBase Low Slope Mount, 3.25" Post - 3.75" Net, Mill
QMLSH-5-A-12	QBase Low Slope Mount, 4.5" Post - 5" Net, Mill
QMLSH-7-A-12	QBase Low Slope Mount, 6.5" Post - 7" Net, Mill
QMLSH-9-A-12	QBase Low Slope Mount, 8.5" Post - Net 9", Mill
QMLSH-12-A-12	QBase Low Slope Mount, 11.5" Post - 12" Net, Mil



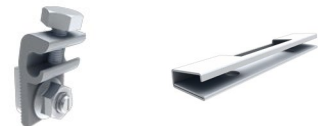
Rail Attachment Hardware

Item Number	Description
QMR-TB20P-A-300	20mm T-Bolt w/ Nut, Patch, SS (6 Bags of 50)



Grounding

Item Number	Description
QMR-GLQ-A-50	Grounding lug, QRail, AL, w/T-Bolt
QMR-ECW-A-50	WEEB BMC, SS (5 Bags of 10)
QMR-WC-A-300	Trunk/PV Cable Clip, SS (25 Bags of 12)



Accessories

Item Number	Description
QMAFBU-A-25	Accessory Frame Bracket, Universal, Mill
QMQB-J1-B-10	QBox™ Junction Box, Bronze

