



January 11, 2012

Mr. Stewart Wentworth
QUICK MOUNT PV
936 Detroit Avenue, Suite D
Concord, CA 94518-2539

Project Number 112012C

Subject: QBase with 6.5" Post Shear Load Testing

Dear Mr. Wentworth:

As requested, Applied Materials & Engineering, Inc. (AME) has completed load-testing the QBase hardware. The purpose of our testing was to evaluate the shear load capacity of the QBase with 6.5" post attached to a steel base plate.

SAMPLE DESCRIPTION

Five (5) mockup samples were delivered to our laboratory on January 9, 2012. Mockup configuration consisted QBase attached to a 6.5" post. Product hardware drawings are provided in Appendix A.

TEST PROCEDURES & RESULTS


Five samples were tested for shear strength on January 10, 2012 using a United Universal testing machine. The QBase was rigidly attached to the steel platen of the testing machine and a shear load was applied to the 5/16"x1" machine bolt connected to the aluminum standoff. The samples were loaded at a constant rate of axial deformation of 0.01 in./min. without shock until failure occurred. Based on the above testing, the average shear load of the QBase with 6.5" post attached to a steel base plate was determined to be 1142 lbf. Detailed results are provided in Table I. Test setup and typical failure modes are shown in Photograph 1 and Photograph 2, respectively.

If you have any questions regarding the above, please do not hesitate to call the undersigned.

Respectfully Submitted,

APPLIED MATERIALS & ENGINEERING, INC.

Reviewed By:


Mohammed Faiyaz
Laboratory Manager


Armen Tajirian, Ph.D., P.E.
Principal

TABLE I

**QBASE ATTACHED DIRECTLY TO STEEL BASE WITH 6.5" POST
SHEAR LOAD TEST RESULTS**

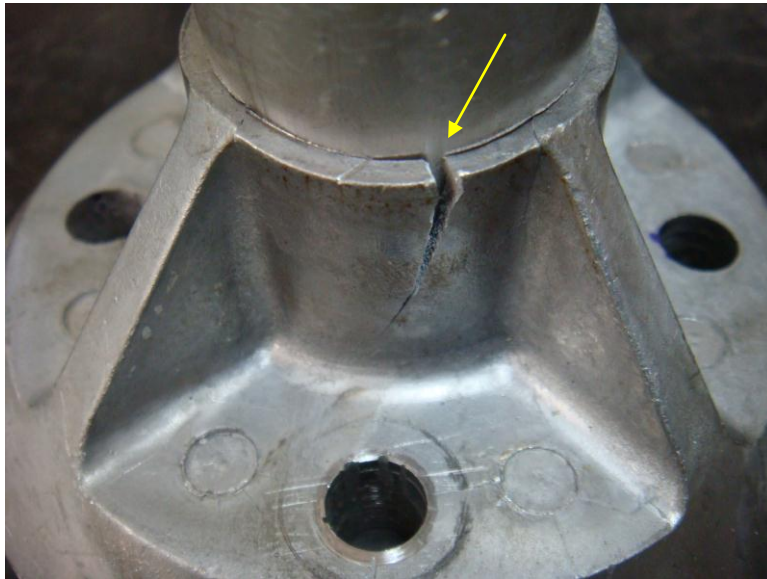
PROJECT NUMBER 112012C

SAMPLE ID	ULTIMATE SHEAR LOAD (LBF)	FAILURE MODE
1	1115	QBase Cracked
2	1235	Post Compression
3	1127	QBase Cracked
4	1007	QBase Cracked
5	1227	Post Compression
AVERAGE	1142	..

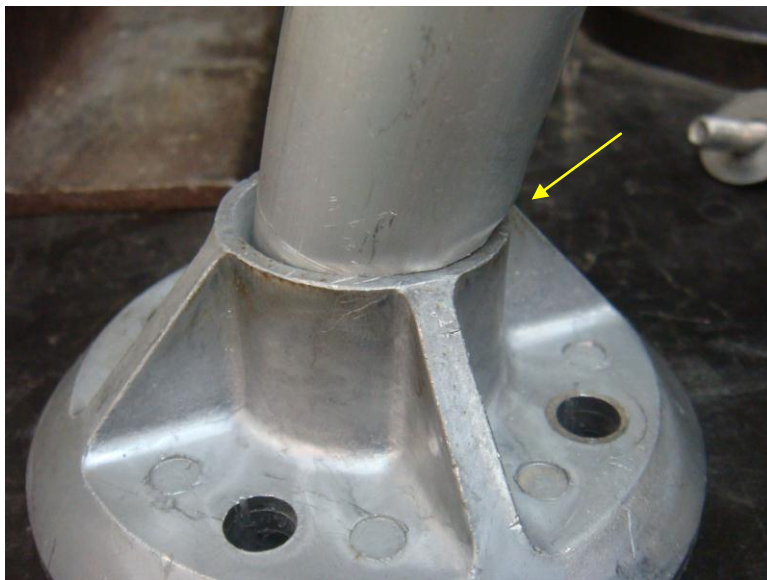
PHOTOGRAPH 2

QBASE ATTACHED DIRECTLY TO STEEL BASE WITH 6.5" POST
SHEAR LOAD TYPICAL FAILURE MODES

PROJECT NUMBER 112012C

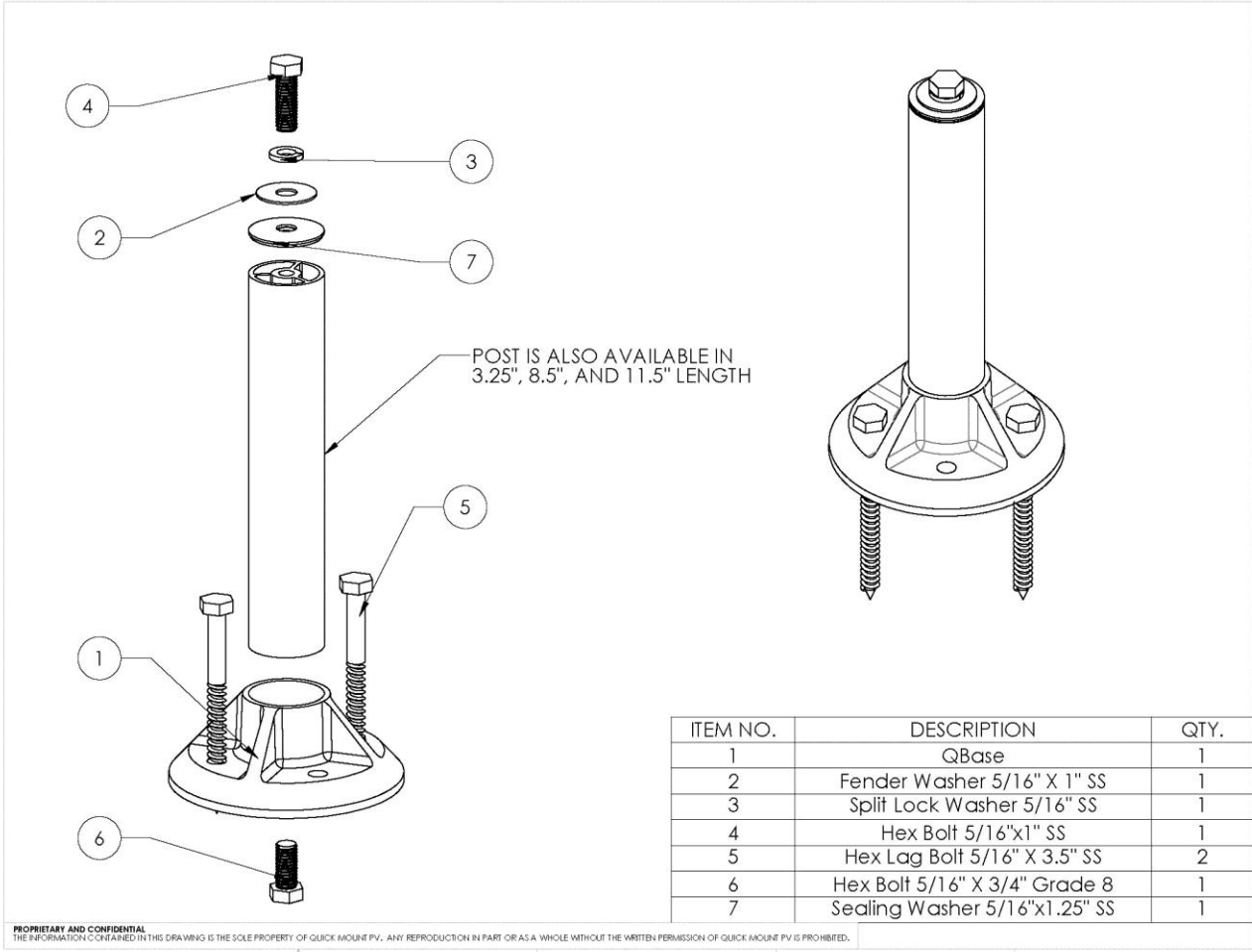


QBase Crack



Post Compression

APPENDIX A



PROPRIETARY AND CONFIDENTIAL
 THE INFORMATION CONTAINED IN THIS DRAWING IS THE SOLE PROPERTY OF QUICK MOUNT PV. ANY REPRODUCTION IN PART OR AS A WHOLE WITHOUT THE WRITTEN PERMISSION OF QUICK MOUNT PV IS PROHIBITED.